

BlueSnap DB9-M6A Wireless RS232 Dongle



The DB9-M6A wireless dongle is used to wirelessly enable RS-232 serial port devices.

The DB9-M6A dongle has a DB9 male connector with pinout like that of a legacy PC RS-232 serial port or a USB to RS-232 serial port adapter. To connect the M6A to a PC type serial port (also DB9 male) to transfer data a female-female null-modem adapter is required.

BlueSnap female connector is available.

BlueSnap is available with and without a rechargeable battery and is always-on when power is supplied on the power connector or DB9-PIN9.

Battery recharge time from empty is less than 2 hours, runtime is typically about 8 hours. The M6A is fully functional while charging.

To power on and charge the M6A provide 5V regulated power via USB plug cable provided with the M6A, or apply regulated 5V to DB9 PIN9. The unit typically uses less than 30mA when operating.

Contact Serialio for BlueSnap variant that can work from 5V-12V and other voltages.

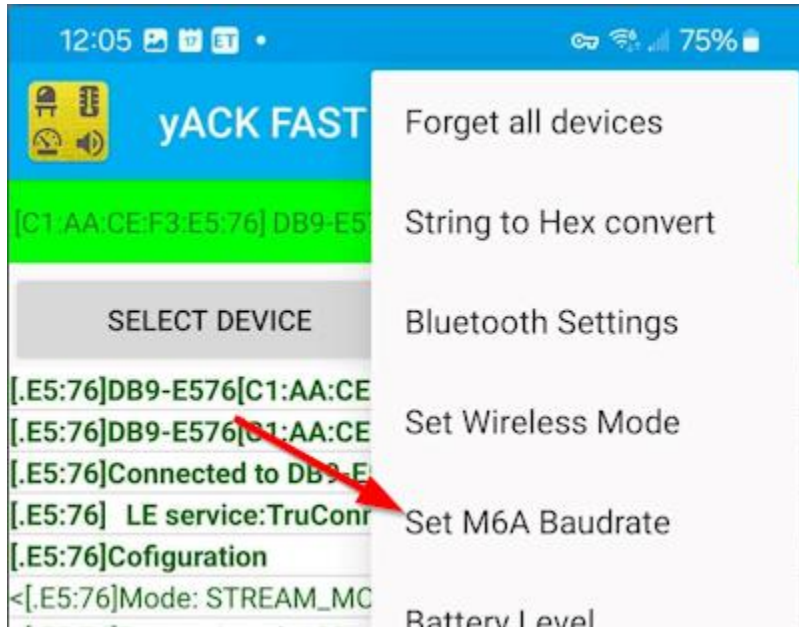
To power on M6A press the button until the LED starts to blink, release button.

To power off M6A press the button, LED will blink a short time, blinking will stop, release the button.

DB9-M6A supports baudrates 1200, 2400, 4800, 9600, 19200, 38400, 57600, 115200 (custom firmware available for more baudrates with MOQ)

The default baudrate is 115200. To change the baudrate use the yACK FAST app on Android or iOS.

Use "SELECT DEVICE" and tap on the M6A name, to connect [yACK FAST app](#) to M6A, then use the "Set M6A Baudrate" option.



To change the 8 character wireless discovery name of the BlueSnap use the command 'set sy d n <name>', and tap SEND, verify success reply.

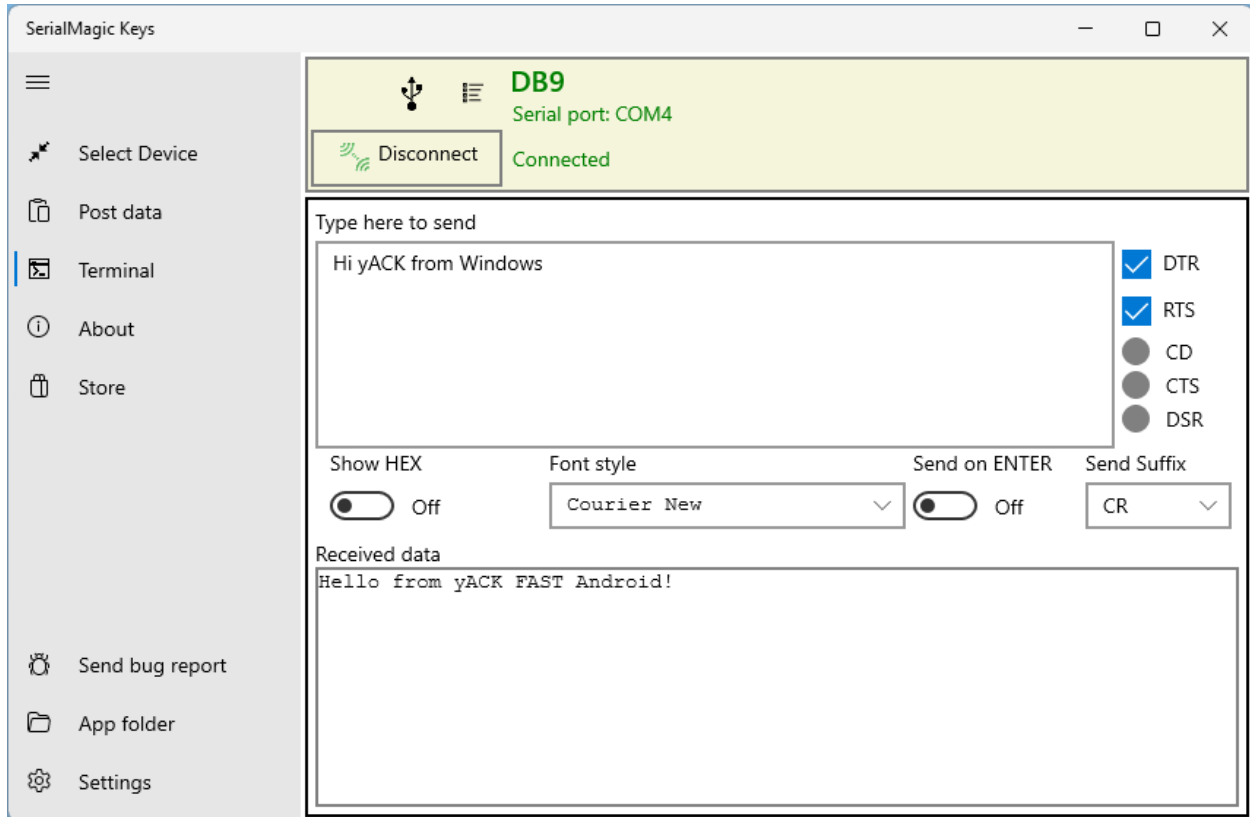
To use discovery name that has 3-character value, and maintain the last 4 digits in the wireless MAC address, use the command 'set sy d n <val>-####' e.g. 'set sy d n DB9-####', then send command Save, and power cycle. IMPORTANT NOTE: changing the discovery name may affect how apps work like SerialMagic Keys, iScanBrowser, Cloud-In-Hand® Mobile Grid, Cloud-In-Hand®, Cloud-In-Hand®, Stratus-io Time & Attendance, and apps made with the Serialio.com SDM libraries.

Battery version of the M6A will power off after a few minutes with no wireless connection to a host.

To set the time for this power off feature, use command 'set sy a t <seconds>'

For example to have device power off after 5 minutes of no connection, use the command 'set sy a t 3000'. To disable this power off timeout, set the seconds value to 0.

This example will show sending data wirelessly from RS-232 serial port to BlueSnap using the [SerialMagic Keys Professional](#) app on Windows, and yACK FAST app Android.



SerialMagic Keys Professional is connected and in Terminal mode, data sent from yACK FAST is shown in “Received data” and “Type here to send” data is shown on yACK FAST.



For support contact Serialio.com <https://www.serialio.com/support>